



Segregation in Truxton Circle 1880-1930

**Using Census and map data
to discover the character of
a neighborhood**

M Marie Maxwell, author

Truxton Circle

- Where is Truxton Circle?



Credit: Wikipedia

- The name Truxton Circle

Resources

Main

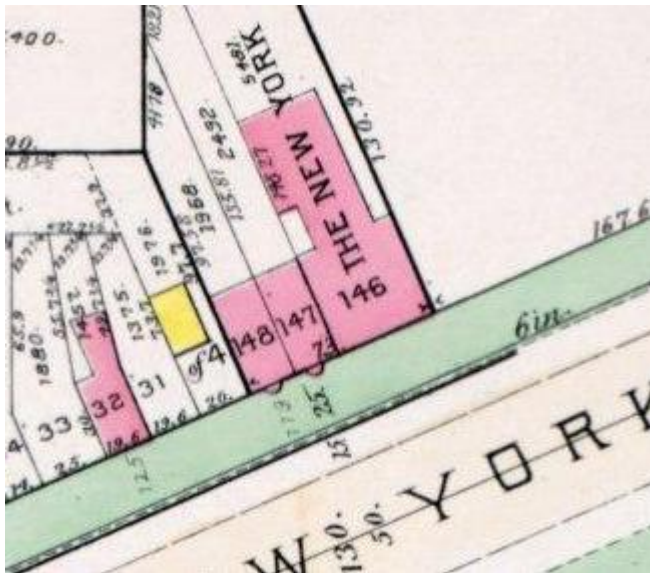
- Census- Ancestry; HeritageQuest; National Archives microfilm
- Maps- Hopkins, Sanborn, and Baist

Supporting

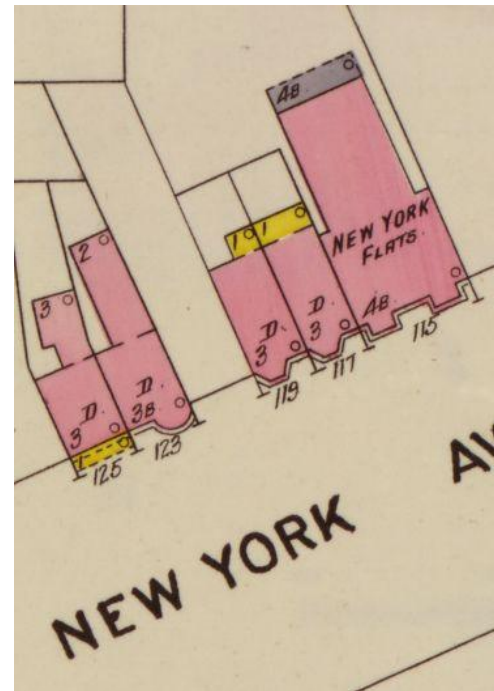
- Boyd's City Directories
- Property Tax
- Dr. Stephen Morse's website
<http://www.stevemorse.org/>

Baist vs Sanborn

Baist 1903



Sanborn 1904

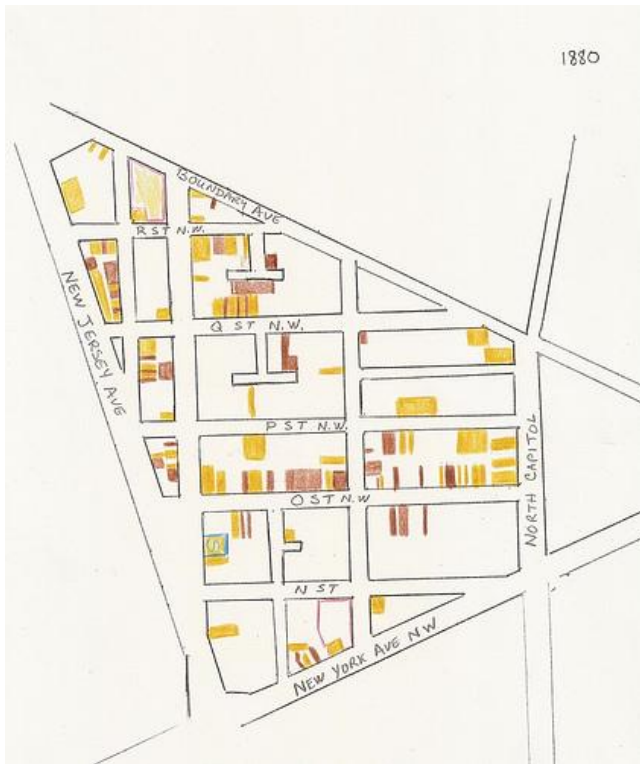


Methodology

- Locate addresses in study area
- Locate enumeration districts (EDs) for each census year
- Copy and paste from Ancestry index
- Add addresses, occupations, and ownership data
- Attempt to match addresses to addresses and properties on closest dated map

Patterns of Segregation/Integration

1880

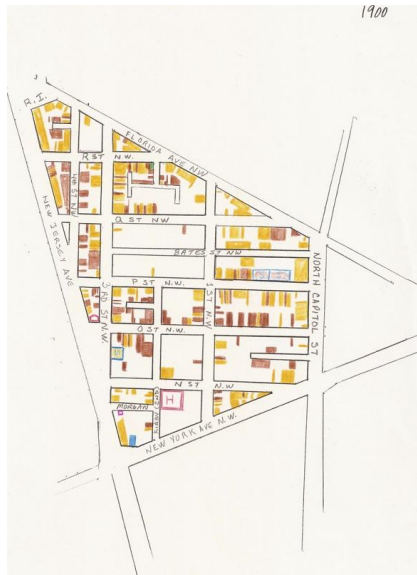


1900 (20 yrs later)



Patterns of Segregation/Integration

1900



1910



Patterns of Segregation/Integration

1910



1920



Patterns of Segregation/Integration

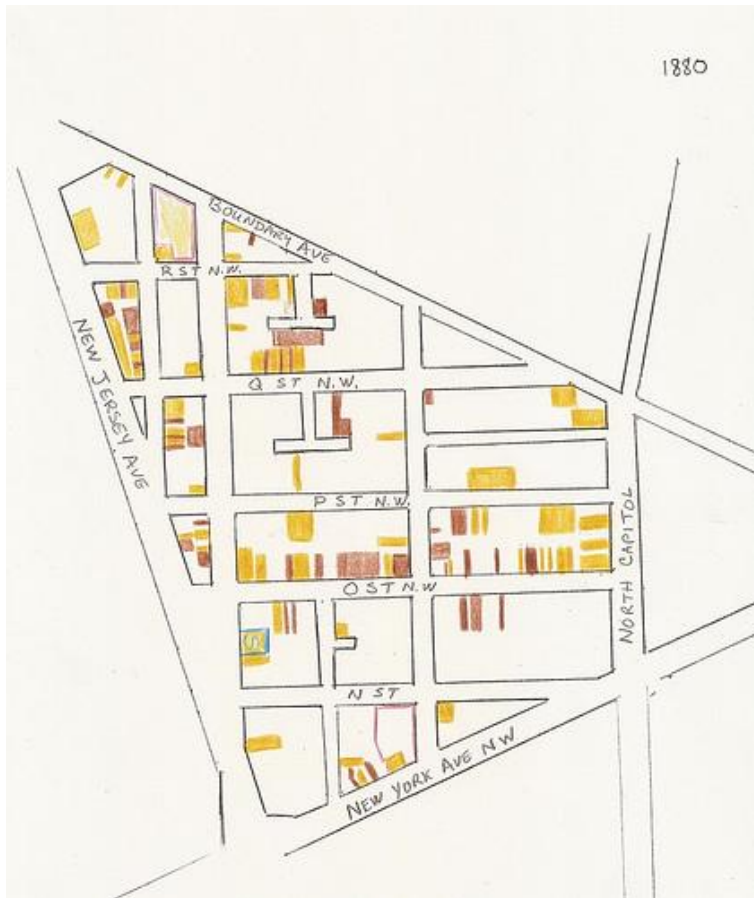
1920



1930



1880



- A couple of large tracts used for agricultural and residential use. Glorius & Loeffler.
- Squares with lots but no buildings.
- Squares with buildings but no residents.

Sq. 519



1890

- No 1890 census material covering this area
- Lost
- Directories would make some effort possible, but reverse look up quite difficult.

1900- WSIC



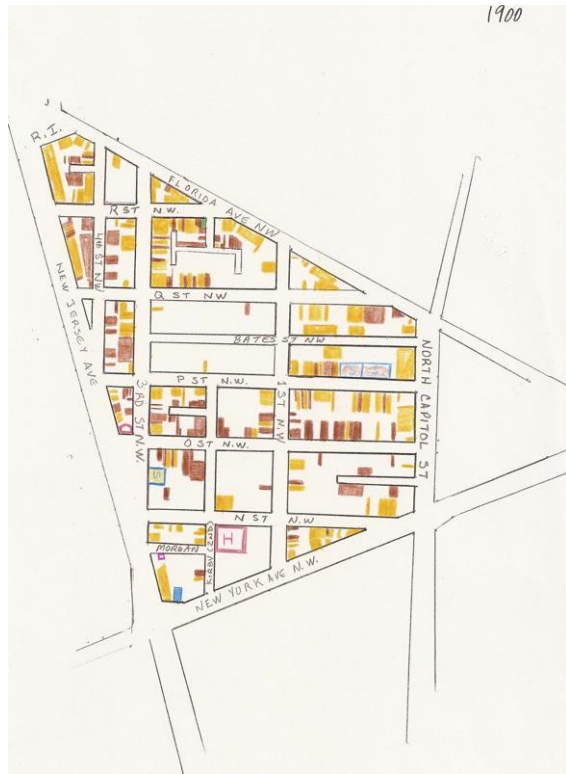
1910



- Becomes filled out for the majority of squares
- More commercial buildings and schools. Langston, Slater, and Armstrong appear.
- WSIC units majority white tenants in center.

Compare

1900



1910



1920



- Dunbar and another African American training school (MM Washington) appears.
- Clustering of ethnic groups. Little less integration than 1910.

Compare

1910



1920



1930



- Neighborhood becomes more African American.
- More space for African American Schools.
- More African American residents.
- Whites in WSIC housing and along North Capitol and NY Avenue.
- More commercial buildings, such as gas stations.

Compare

1920



1930



House by house Person by person

The Glorious Glori of Sq. 519

- George Glorius (1821-1908)
- George Glorius, Jr (1858-1921)

The curious case of Lucky Cafus Young of S.C.

- 1930-1203 New Jersey Ave. White & Married
- 1942- Living in DC- Widowed & Black. Enlisted Private
- 1964-Shot at 100 blk of Q St NW. Lived at 47 Randolph Pl NW

House by house

Person by person (cont)

The Flynns of 1735 New Jersey Avenue



- » Rosalie/Rosa Lee (Smith) Flynn, widow, 62 years old in 1920
- » Charles D. Flynn, son, 20, y.o. clerk in 1920. A married 30 y.o. lawyer in Atlanta, GA in 1930.

Credit: Ancestry.com

Data

- 1880 limited occupations for African Americans. Laborers, laundresses, domestics
- Of working women, Afr-Am women single & married. White working women adult daughters and single women 1900-1930
- Chinese men in laundry profession in 1900-1930

More new questions

- As people live their lives and get older, where do they move and why?
- When do changes in society get reflected in the landscape?
- Does property ownership matter?
- When a neighborhood changes are there other factors that are ignored because it doesn't fit the great narrative?